



GAT MONTHLY MEMBERSHIP PROGRESS REPORT

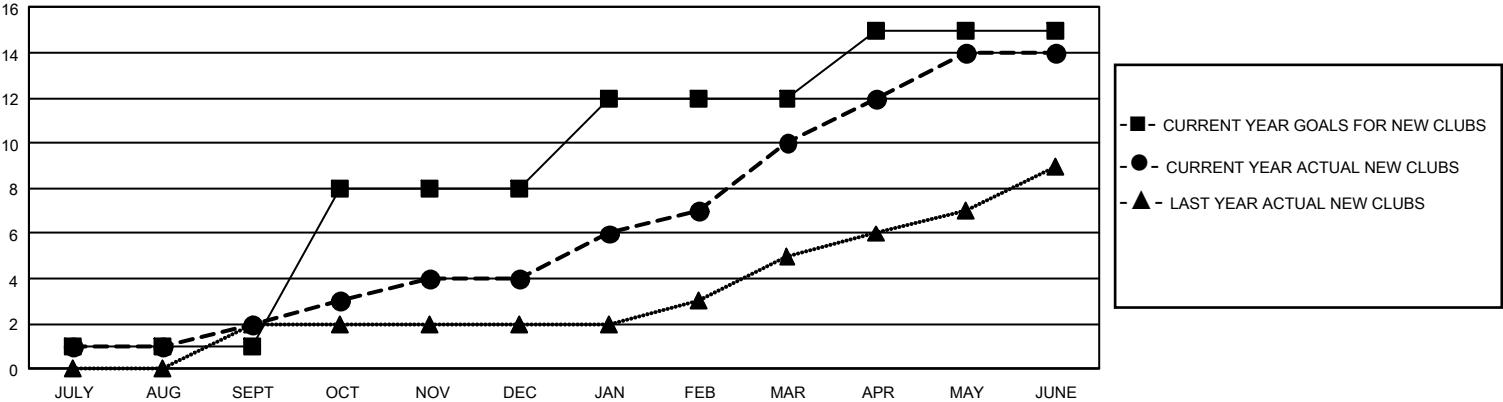
Results as of: 6/30/2025

GMT Constitutional Area 5 - J, Group I

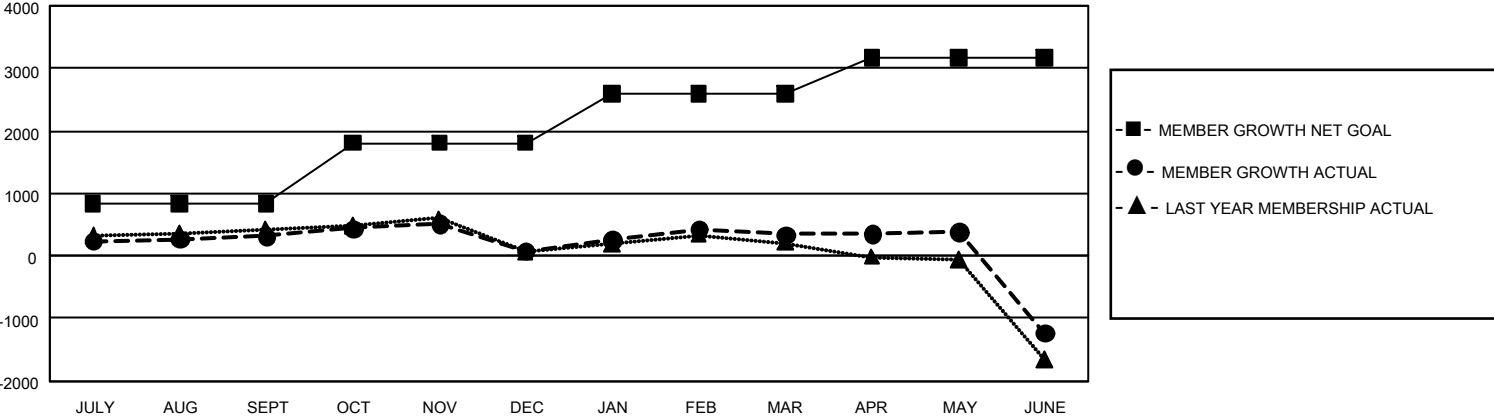
REPORT DOES NOT INCLUDE CLUBS IN UNDISTRICTED AREAS.

Clubs				Members			
RESULTS FOR 2024-2025				RESULTS FOR 2024-2025			
QUARTER	NEW CLUB GOAL	NEW CLUBS	DROPPED CLUBS	QUARTER	MEMBER GROWTH NET GOAL	MEMBER GROWTH ACTUAL	DROPPED MEMBERS ACTUAL (including transfers)
JULY/AUG/SEPT	3	2	1	JULY/AUG/SEPT	830	1,103	681
OCT/NOV/DEC	21	2	7	OCT/NOV/DEC	981	677	862
JAN/FEB/MAR	12	6	1	JAN/FEB/MAR	785	896	580
APR/MAY/JUNE	9	4	25	APR/MAY/JUNE	571	1,079	2,494

GOALS AND ACTUAL NEW CLUBS CUMULATIVE



GOALS AND ACTUAL MEMBERS CUMULATIVE



DROPPED CLUBS: 34	820 CLUBS OF 1,103 ADDED 1 OR MORE NEW MEMBERS	<u>GENDER DISTRIBUTION</u>	
<u>DROPPED MEMBERS</u>		MALE	29,028 (78.41%)
DECEASED 309	CLICK HERE FOR CUMULATIVE MEMBERSHIP DATA	FEMALE	7,985 (21.57%)
CLUB CANCELLED 37		NON BINARY	1 (0.00%)
OTHER 4,206		PREFER NOT TO ANSWER	5 (0.01%)
TOTAL 4,552		TOTAL FAMILY UNIT MEMBERS	8,549
		FAMILY MEMBERS PAYING HALF DUES	4,735